



SINGLE-PHASE BRIDGE RECTIFIER W005MF ~ W10MF (WOM Package) 2 Amp

Single-Phase Bridge Rectifier

Features

- Low cost
- High forward surge current capability
- Integrally molded heatsink provide very low thermal resistance.
- High temperature soldering guaranteed:
260°C/10 seconds, 0.375" (9.5mm) lead length, at 5lbs. (2.3kg) tension
- RoHS and REACH Compliance



Mechanical Data

Case:	Molded Plastic Body suffix "N" for thinner type
Polarity	Polarity symbols marked on case
Terminals:	Plated 0.25"
Mounting position:	Any
Weight:	0.042 ounce, 1.2 gram

Maximum Ratings ($T_{Ambient}=25^{\circ}C$ unless noted otherwise)

Symbol	Description	W005MF	W01MF	W02MF	W04MF	W06MF	W08MF	W10MF	Unit	Conditions
VRRM	Max Recurrent Peak Reverse Voltage	50	100	200	400	600	800	1000	V	
VRMS	Max RMS Voltage	35	70	140	280	420	560	700	V	
VDC	Max DC Blocking Voltage	50	100	200	400	600	800	1000	V	
I(AV)	Max Average Forward Rectified Current	2							A	TA=25°C (Note 1)
IFSM	Peak Forward Surge Current	50							A	JEDEC method
TJ,TSTG	Operating and Storage Temperature Range	-55 to +125, -65 to +150							°C	
I2t	Rating for Fusing	10							A2s	T<8.3mS

Electrical Characteristics ($T_{Ambient}=25^{\circ}C$ unless noted otherwise)

Symbol	Description	W005MF	W01MF	W02MF	W04MF	W06MF	W08MF	W10MF	Unit	Conditions
VF	Max Instantaneous Forward Voltage	1.2			1.3				V	Drop per Bridge element 1.0A
IR	Max DC Reverse Current at Rated DC Blocking Voltage	5			10				µA	TA=25°C
		0.5							mA	TA=100°C
TRR	Maximum reverse recovery time	150		250		500			nS	Note 3 TJ= 25 °C
CJ	Typical Junction Capacitance	25							pF	Note 2

Note:

1. Unit mounted on PCB with 0.22" x 0.22" (5.5 x 5.5mm) copper pads, 0.375" (9.5mm) lead length
2. Measured at 1.0MHz and applied reverse voltage of 4.0 Volts.
3. Reverse recovery test conditions: IF= 0.5A, IR=1.0A, IRR = 0.25A

W005MF ~ W10MF (WOM Package) 2 Amp RATINGS AND CHARACTERISTIC CURVES W005MF THRU W10MF

FIG.1-DERATING CURVE FOR
OUTPUT RECTIFIED CURRENT

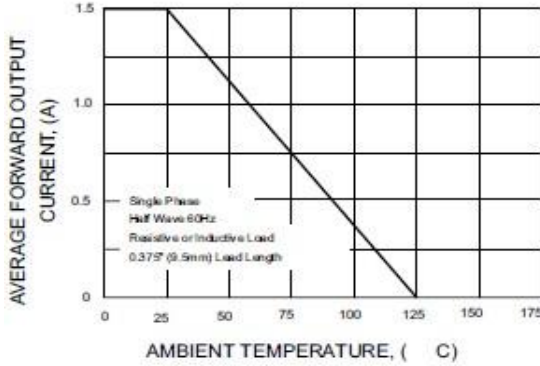


FIG.2-MAXIMUM NON-REPETITIVE PEAK
FORWARD SURGE CURRENT PER ELEMENT

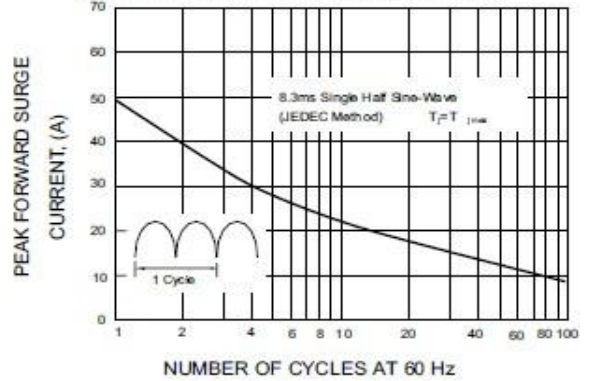


FIG.3-TYPICAL INSTANTANEOUS
FORWARD CHARACTERISTICS

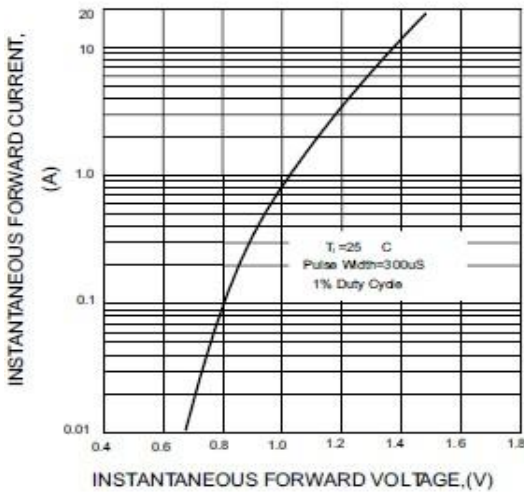


FIG.4-TYPICAL REVERSE
CHARACTERISTICS

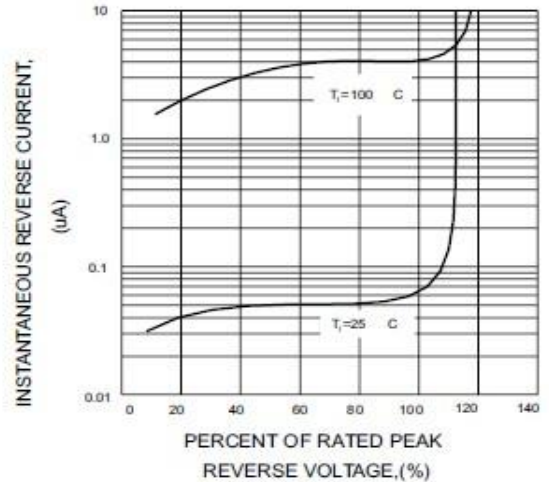


FIG.5-TYPICAL JUNCTION CAPACITANCE

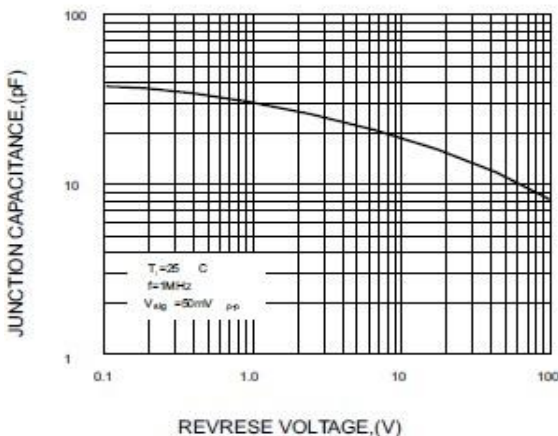
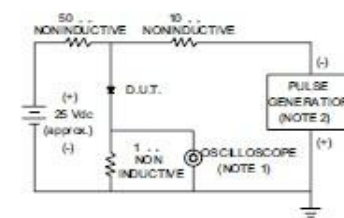
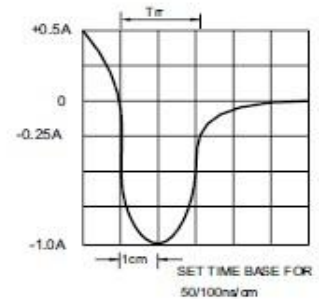
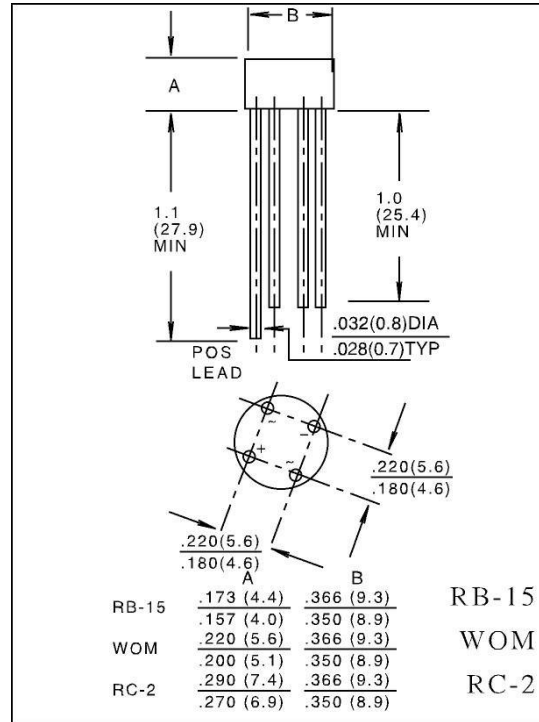


FIG.6-TEST CIRCUIT DIAGRAM AND
REVERSE RECOVERY TIME CHARACTERISTIC



NOTES: 1. Rise Time ~7ns max. Input Impedance= 1 megohm, 22pF
2. Rise Time=10ns max. Source Impedance= 50 ohms



W005MF ~ W10MF (WOM Package) 2 Amp
Dimensions in inches (mm)

Contact us:
US HEADQUARTERS
MEI SEMI INC.
2902 Corvin Drive, Santa Clara, CA95051, USA

Tel: 1-408-733-0808 Fax: 1-408-733-2828