

SURFACE MOUNT SCHOTTKY BARRIER RECTIFIERS

MBRX220L--MBRX2A0L

FEATURES

- Low forward surge current
- Ideal for surface mounted applications
- Low leakage current



MECHANICAL DATA

- Case: JEDEC SOD-123FL, molded plastic over passivated chip
- Terminals: Solder Plated, solderable per MIL-STD-750, Method 2026
- Polarity: Color band denotes cathode end

Maximum Ratings (@TA = 25°C unless otherwise specified)

Characteristic	Symbol	MBRX220L	MBRX230L	MBRX240L	MBRX260L	MBRX280L	MBRX2A0L	UNITS
Device marking code		L22	L23	L24	L26	L28	L2A	
Maximum recurrent peak reverse voltage	V_{RRM}	20	30	40	60	80	100	V
Maximum RMS voltage	V_{RMS}	14	21	28	42	56	70	V
Maximum DC blocking voltage	V_{DC}	20	30	40	60	80	100	V
Maximum average forward drectified current $T_J=90^\circ\text{C}$	$I_{(AV)}$	2.0						A
Peak forward surge current 8.3ms single half-sine-wave superimposed on rated load	I_{FSM}	40						A

Thermal Characteristics

Characteristic	Symbol	MBRX220L	MBRX230L	MBRX240L	MBRX260L	MBRX280L	MBRX2A0L	UNITS
Operating temperature range	T_J	- 55 --- + 125				- 55 --- + 150		°C
Storage temperature range	T_{STG}	- 55 --- + 150						°C

Electrical Characteristics (@TA = 25°C unless otherwise specified)

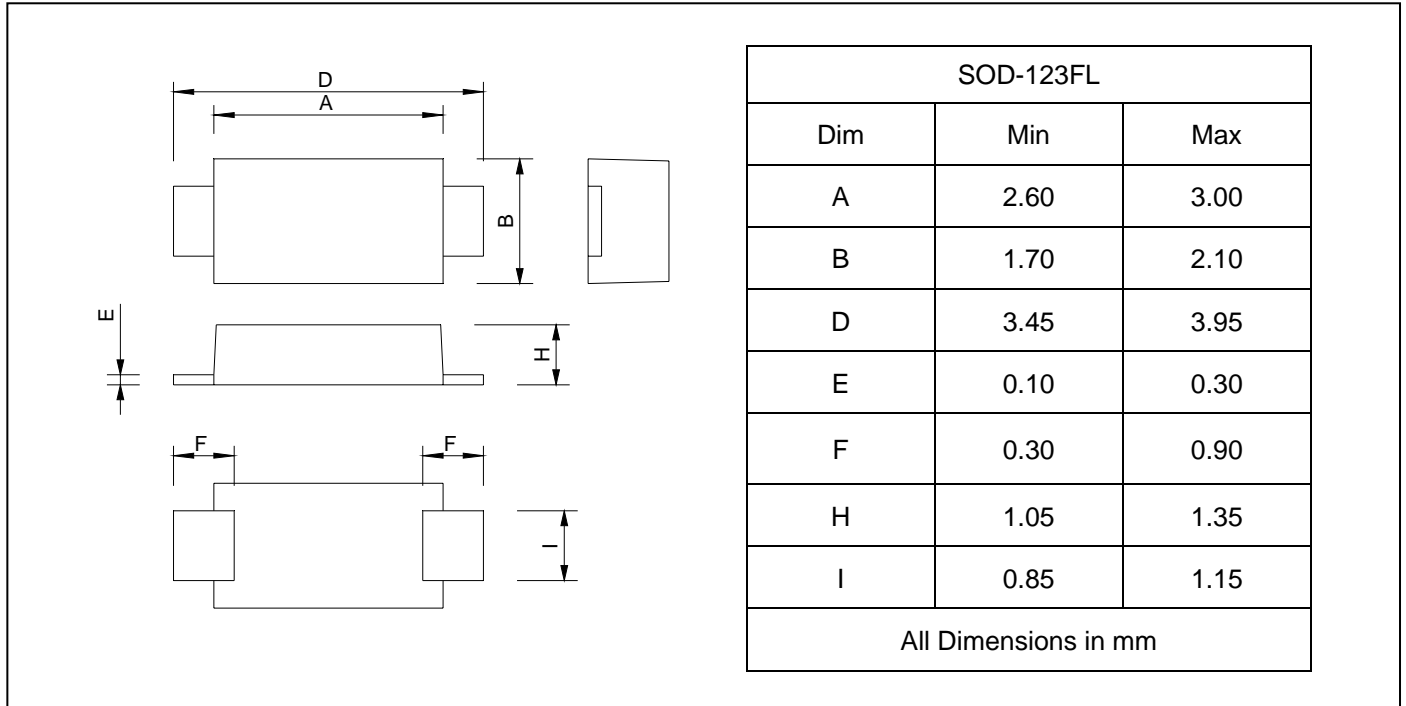
Characteristic	Symbol	MBRX220L	MBRX230L	MBRX240L	MBRX260L	MBRX280L	MBRX2A0L	UNITS
Maximum instantaneous @ $I_{FM}=2.0\text{A}$ forward voltage	V_F	0.45			0.58	0.63		V
Maximum DC reverse current $T_J=25^\circ\text{C}$ at rated DC blocking voltage $T_J=125^\circ\text{C}$	I_R				0.5			m A
					20			

NOTE 1. Measured at $f=1.0\text{MHz}$, $V_R=4.0\text{V}$

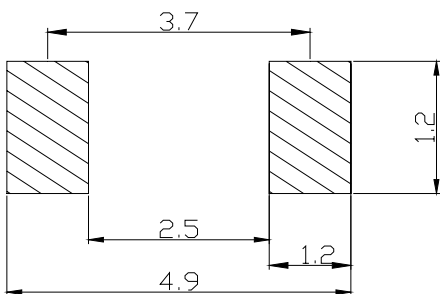
SURFACE MOUNT SCHOTTKY BARRIER RECTIFIERS

MBRX220L--MBRX2A0L

PACKAGE OUTLINE DIMENSIONS



SOLDERING FOOTPRINT



Unit : mm

PACKAGE INFORMATION

Device	Package	Shipping
MBRX220L--MBRX2A0L	SOD-123FL	10000/Tape&Reel