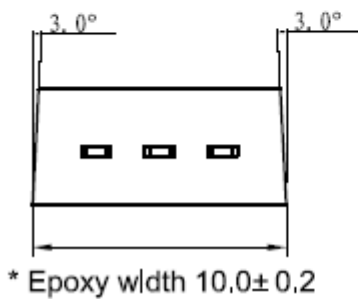
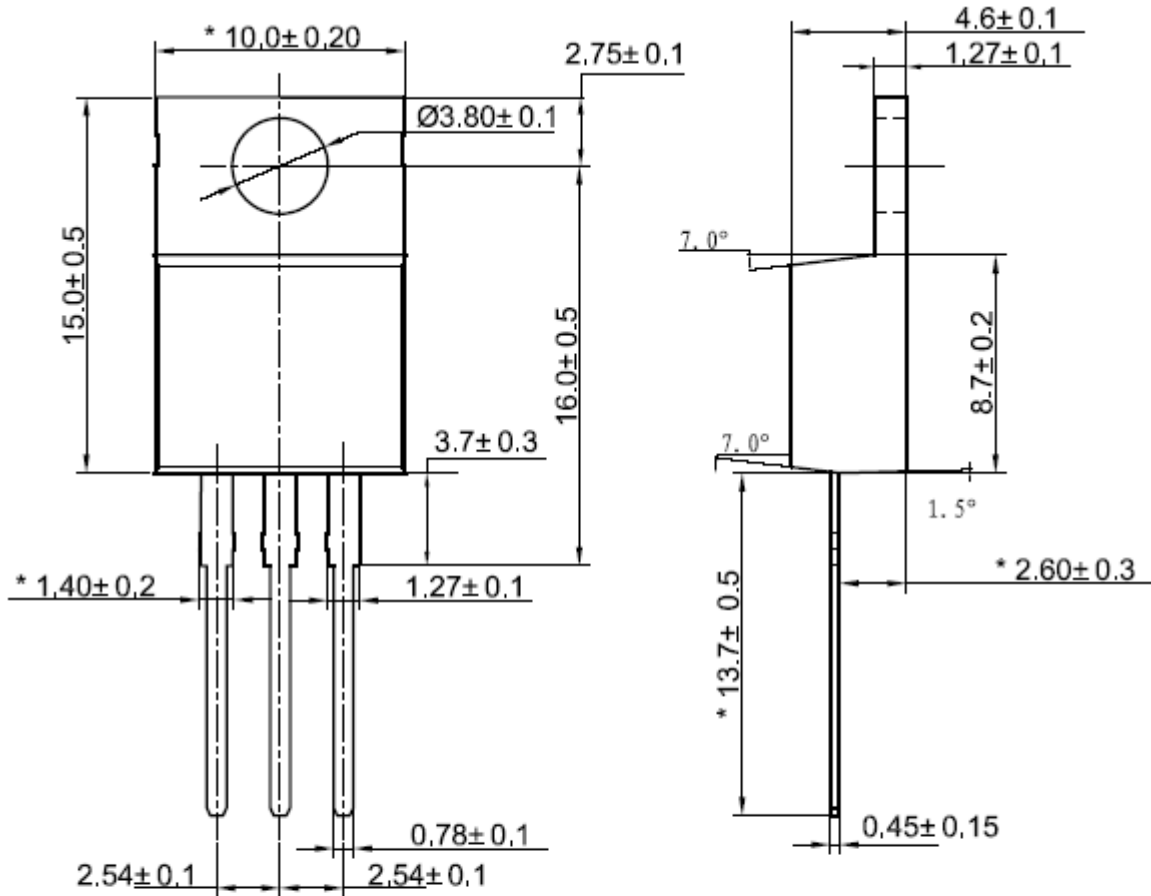




APPROVAL DRAWING

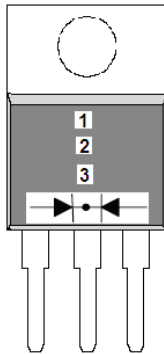
product name
MUR20xxCT series (RoHS compliant)

1.CASE DIMENSION(TO-220AB)





2. MARK (for example: MUR2020CT)



1. Logo Mark: GD
2. Part Name: MUR2020CT
3. Date code:

3. MAXIMUM RATINGS AND ELECTRICAL CHARACTERISTICS

Ratings at 25°C ambient temperature unless otherwise specified.

Parameter	Symbol	MUR2010CT	MUR2020CT	Unit
Maximum repetitive peak reverse voltage	V_{RRM}	100	200	Volts
Maximum RMS voltage	V_{RMS}	70	140	Volts
Maximum DC blocking voltage	V_{DC}	100	200	Volts
Maximum average forward rectified current at $T_c=95^\circ\text{C}$	$I_{F(AV)}$	20.0		Amps
Peak forward surge current 8.3ms single half sine-wave superimposed on rated load(JEDEC Method)	I_{FSM}	125.0		Amps
Maximum instantaneous forward voltage at 10.0A per element	V_F	1.1	1.0	Volts
Maximum DC reverse current at rated DC blocking voltage	$T_j=25^\circ\text{C}$	5.0		uA
	$T_j=100^\circ\text{C}$	100		
Maximum reverse recovery time at $I_F=0.5\text{A}$, $I_R=1.0\text{A}$, $I_{RR}=0.25$	T_{RR}	35		nS
Typical junction capacitance at 4.0V, 1MHz	C_J	100		pF
Typical thermal resistance(Note1)	R_{THJC}	3.0		$^\circ\text{C}/\text{W}$
Operating junction and storage temperature range	T_J , T_{STG}	-55 to +150		$^\circ\text{C}$

Note: 1. Thermal resistance from Junction to Case



4. RATINGS AND CHARACTERISTIC CURVES(T_A=25°C unless otherwise noted)

Figure 1
Typical Forward Characteristics

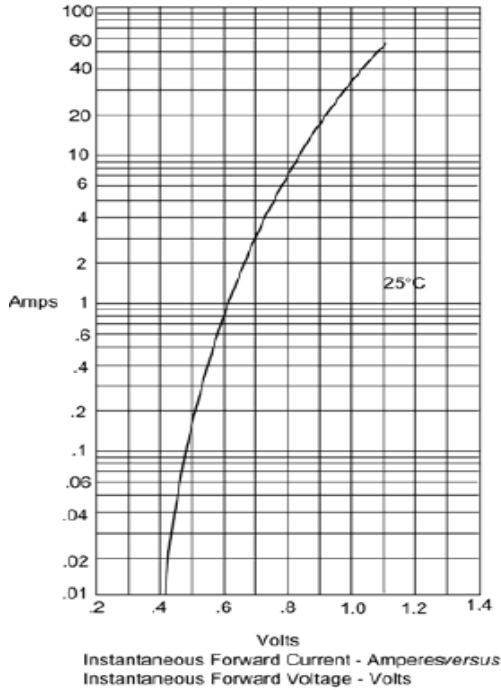


Figure 2
Typical Reverse Characteristics

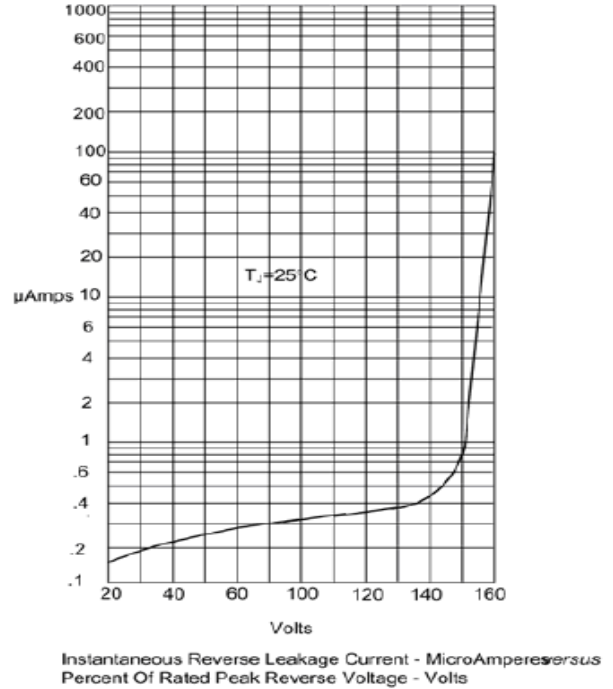


Figure 3
Forward Derating Curve

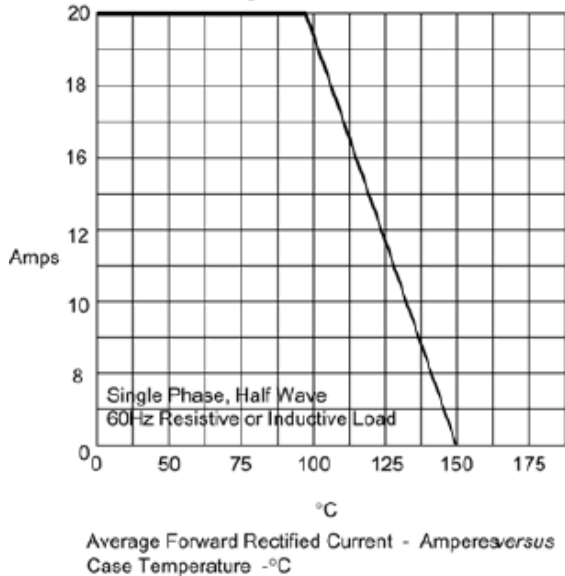


Figure 4
Maximum Non-Repetitive Forward Surge Current

