



## SURFACE MOUNT SCHOTTKY BARRIER RECTIFIERS

### SS32FA--SS310FA

### FEATURES

- Schottky barrier rectifier
- Guarding protection
- Reverse energy tested
- High current capability
- Extremely low thermal resistance



### MECHANICAL DATA

- Case: SMAFL molded plastic body
- Polarity: Color band denotes cathode end

### Maximum Ratings (@TA = 25°C unless otherwise specified)

Characteristic	Symbol	SS32FA	SS33FA	SS34FA	SS35FA	SS36FA	SS38FA	SS39FA	SS310FA	UNITS
Device marking code		S32	S33	S34	S35	S36	S38	S39	S3AF	
Maximum repetitive peak reverse voltage	$V_{RRM}$	20	30	40	50	60	80	90	100	V
Maximum RMS voltage	$V_{RWS}$	14	21	28	35	42	56	63	70	V
Maximum DC blocking voltage	$V_{DC}$	20	30	40	50	60	80	90	100	V
Maximum average forward rectified current at $T_L=90^\circ\text{C}$	$I_{F(AV)}$	3.0								A
Peak forward surge current 8.3ms single half-sine-wave	$I_{FSM}$	100.0								A

### Thermal Characteristics

Characteristic	Symbol	SS32FA	SS33FA	SS34FA	SS35FA	SS36FA	SS38FA	SS39FA	SS310FA	UNITS	
Operating temperature range	$T_J$	-55----+125					-55----+150				°C
Storage temperature range	$T_{STG}$	-55----+150									°C

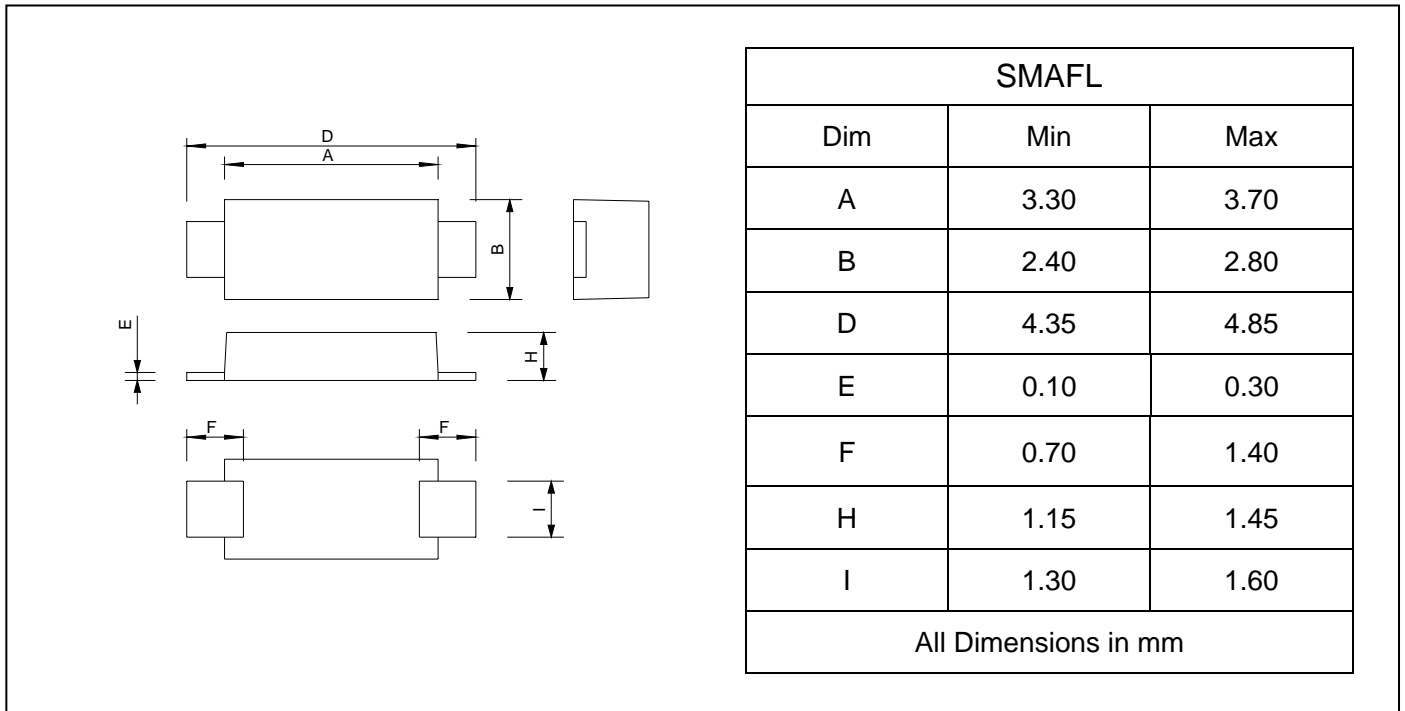
### Electrical Characteristics (@TA = 25°C unless otherwise specified)

Characteristic	Symbol	SS32FA	SS33FA	SS34FA	SS35FA	SS36FA	SS38FA	SS39FA	SS310FA	UNITS	
Maximum instantaneous forward voltage at $I_{FM}=3.0\text{A}$	$V_F$	0.50			0.75		0.85			V	
Maximum DC reverse current $T_J=25^\circ\text{C}$ at rated DC blocking voltage $T_J=125^\circ\text{C}$	$I_R$	0.5									mA
		20			10						

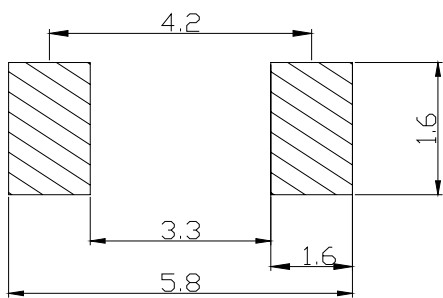
**SURFACE MOUNT SCHOTTKY  
BARRIER RECTIFIERS**

**SS32FA--SS310FA**

**PACKAGE OUTLINE DIMENSIONS**



**SOLDERING FOOTPRINT**



Unit : mm

**PACKAGE INFORMATION**

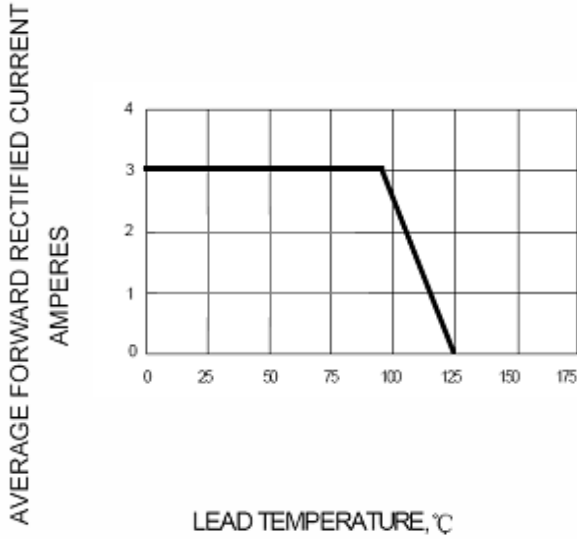
Device	Package	Shipping
SS32FA--SS310FA	SMAFL	10000/Tape&Reel



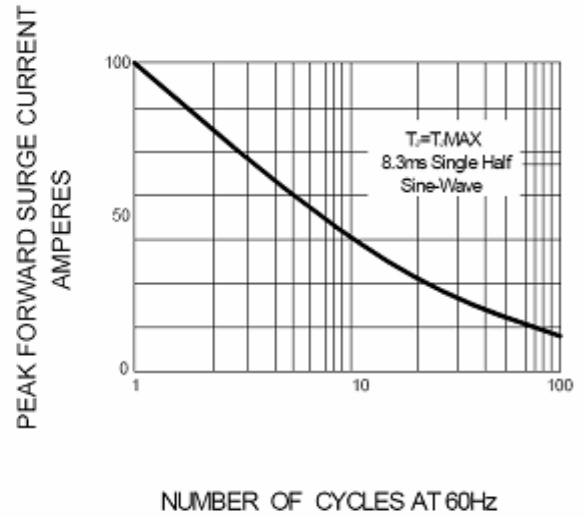
**SURFACE MOUNT SCHOTTKY  
BARRIER RECTIFIERS**

**SS32FA--SS310FA**

**FIG.1 – FORWARD DERATING CURVE**



**FIG.2 – PEAK FORWARD SURGE CURRENT**



**FIG.3 – TYPICAL INSTANTANEOUS FORWARD CHARACTERISTICS**

