



Single Phase Bridge Rectifier

Features

- Plastic package has underwriters laboratory
- Flammability classification 94V-0
- Glass passivated chip junction
- High case dielectric strength
- Ideal for printed circuit board
- High forward surge current capability
- Typical I_r less than 0.1 μ A
- High temperature soldering guaranteed:
260°C/10 seconds, 0.375"(9.5mm) lead length at 5lbs (2.3kg) tension
- RoHS and REACH Compliance

Mechanical Data

Case:	Molded plastic body over passivated functions
Polarity	/
Terminals:	Plated Leads solderable per MIL-STD-750 method 2026
Mounting torque	/
Mounting position:	Any
Weight:	0.04 ounce, 1.1 gram

Maximum Ratings ($T_{Ambient}=25^{\circ}C$ unless noted otherwise)

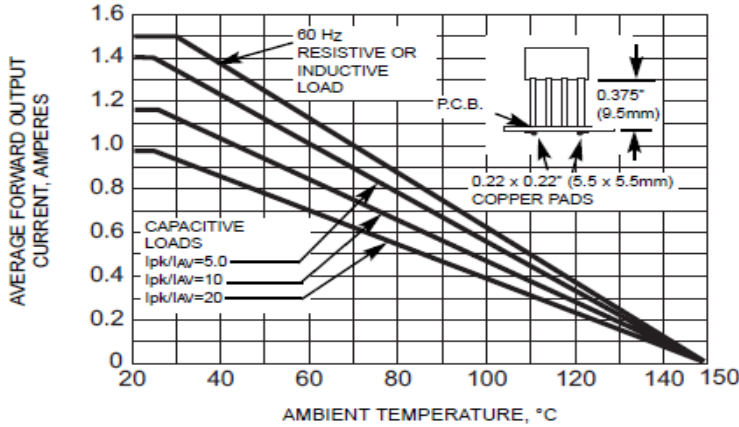
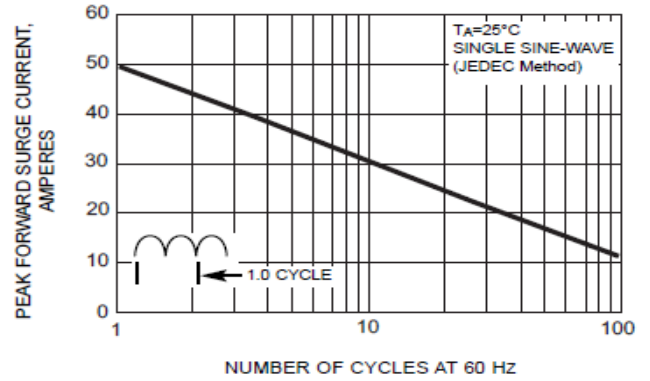
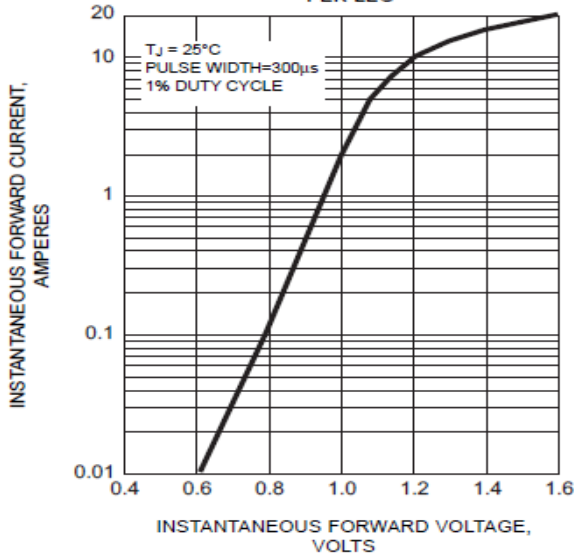
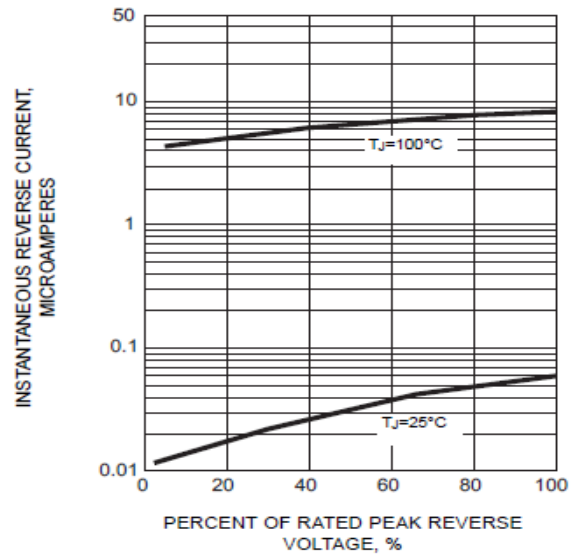
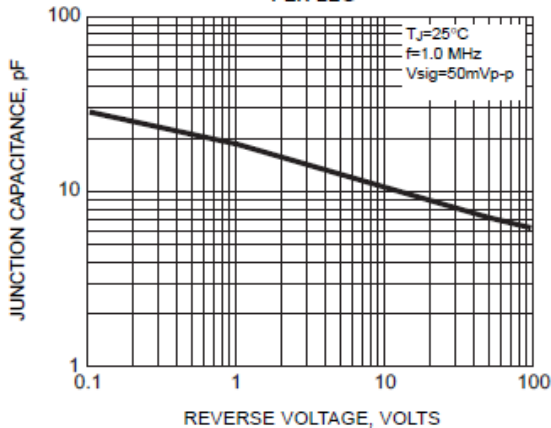
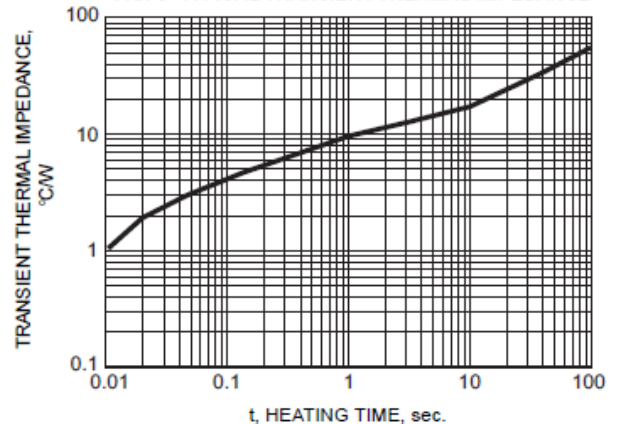
Symbol	Description	W005G	W01G	W02G	W04G	W06G	W08G	W10G	Unit	Conditions
VRRM	Max Recurrent Peak Reverse Voltage	50	100	200	400	600	800	1000	V	
VRMS	Max RMS Voltage	35	70	140	280	420	560	700	V	
VDC	Max DC Blocking Voltage	50	100	200	400	600	800	1000	V	
I(AV)	Max Average Forward Rectified Current	1.5							A	TA=25°C (Note 2)
IFSM	Peak Forward Surge Current	50							A	8.3ms single half sine-wave (JEDEC method)
TJ,TSTG	Operating and Storage Temperature Range	-55 to +150							°C	
I2t	Rating for Fusing	10							A2s	T<8.3mS

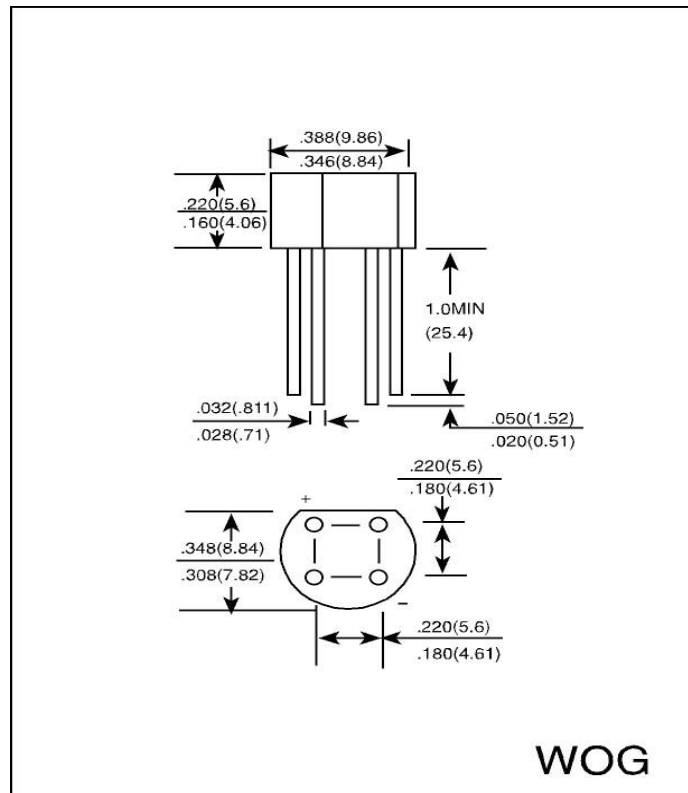
Electrical Characteristics ($T_{Ambient}=25^{\circ}C$ unless noted otherwise)

Symbol	Description	BR1005	BR101	BR102	BR104	BR106	BR108	BR1010	Unit	Conditions
V _F	Max Instantaneous Forward Voltage	1.0							V	Drop per Bridge element 1.0A DC
I _R	Max DC Reverse Current at Rated DC Blocking Voltage	5.0							μ A	TA=25°C
		500.0								TA=100°C
R θ -Ja	Typical Thermal Resistance	36							°C/W	Note 1
R θ -Jl		14								Note 1

Note:

1. Thermal resistance from junction to lead at 0.375"(9.5mm) lead length P.C.B mounting.

W005G ~ W10G
RATINGS AND CHARACTERISTIC CURVES W005G THRU W10G
**FIG. 1 - DERATING CURVE
OUTPUT RECTIFIED CURRENT**

**FIG. 2 - MAXIMUM NON-REPETITIVE PEAK
FORWARD SURGE CURRENT PER LEG**

**FIG. 3 - TYPICAL FORWARD CHARACTERISTICS
PER LEG**

**FIG. 4 - TYPICAL REVERSE CHARACTERISTICS
PER LEG**

**FIG. 5 - TYPICAL JUNCTION CAPACITANCE
PER LEG**

FIG. 6 - TYPICAL TRANSIENT THERMAL IMPEDANCE


Dimensions in inches (mm)**Contact us:****US HEADQUARTERS****MEI SEMI INC.****2902** Corvin Drive, Santa Clara, CA95051, USA

Tel: 1-408-733-0808 Fax: 1-408-733-2828